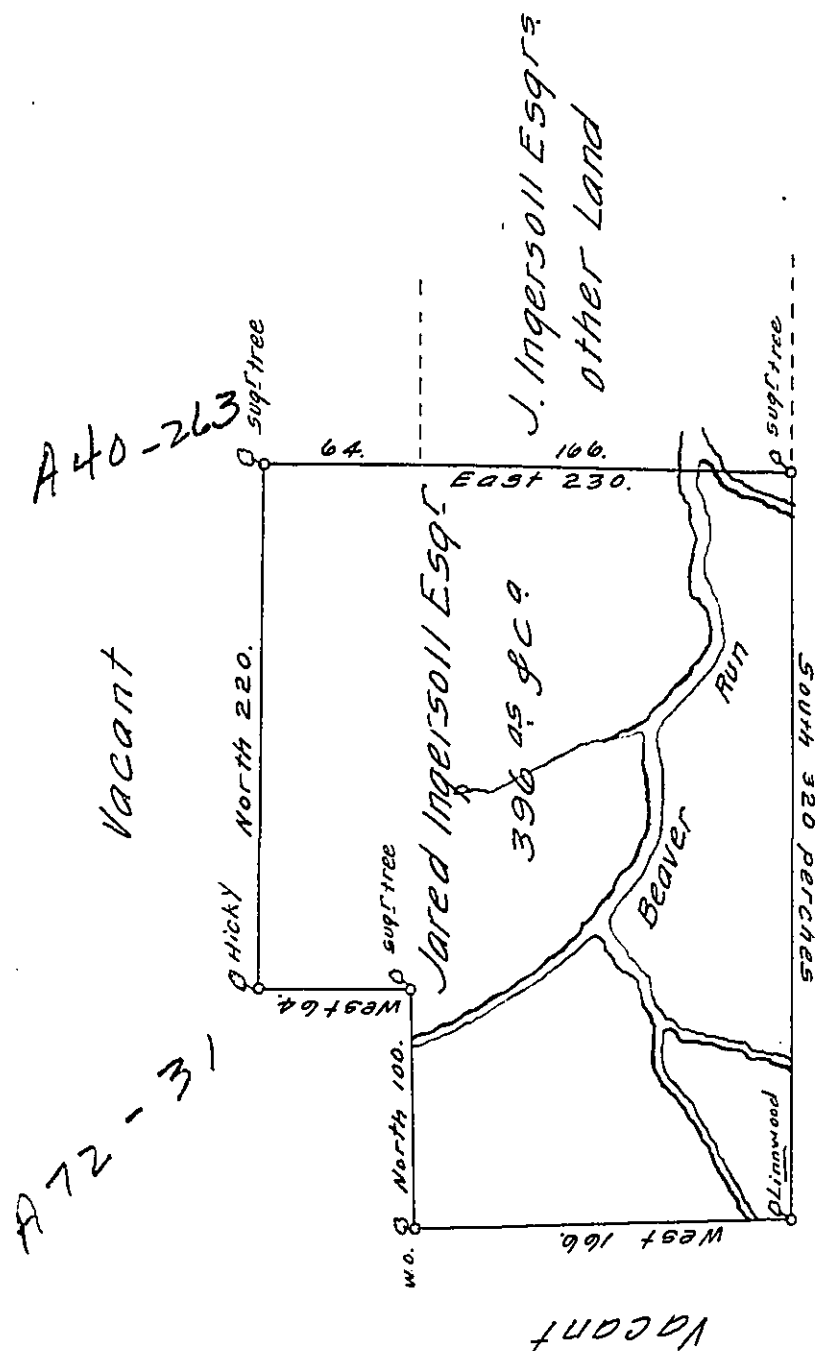


FORM NO. 1.

N^o 354.



A Draught of a Tract of Land situate on Beaver Run a branch of Sandy-lick Creek in the County of Northumberland. containing Three hundred and ninety six Acres and allowance of six Acres per Ct. Surveyed the 27th day of July 1785 for Jared Ingersoll Esquire in pursuance of a Warrant N^o 354 bearing date at Philadelphia the 17th day of May 1785.

Richard Sherer—

To John Lukens Esquire }
Surveyor General. }

IN TESTIMONY that the above is a copy of the original remaining on file in the Department of Internal Affairs of Pennsylvania, made conformably to an Act of Assembly approved the 16th day of February, 1833, I have hereunto set my Hand and caused the Seal of said Department to be affixed at Harrisburg, this twenty ninth day of November 1911.

Henry Houck
Secretary of Internal Affairs.